



VSL

Newsletter18/06/2024



What is considered to be. an intimate area?

Under arms, inner thighs, genital area, mon pubis, groin, anal & buttocks-an area that has a weaker barrier function and more intense reaction to irritants conpoared to other areas

[Read More](#)

The main cause of pigmentation of intimate area?

over the production of melanin which results in 20% more pigment producing cells-melanocyte



What is the best way to treat pigmentation on intimate areas?

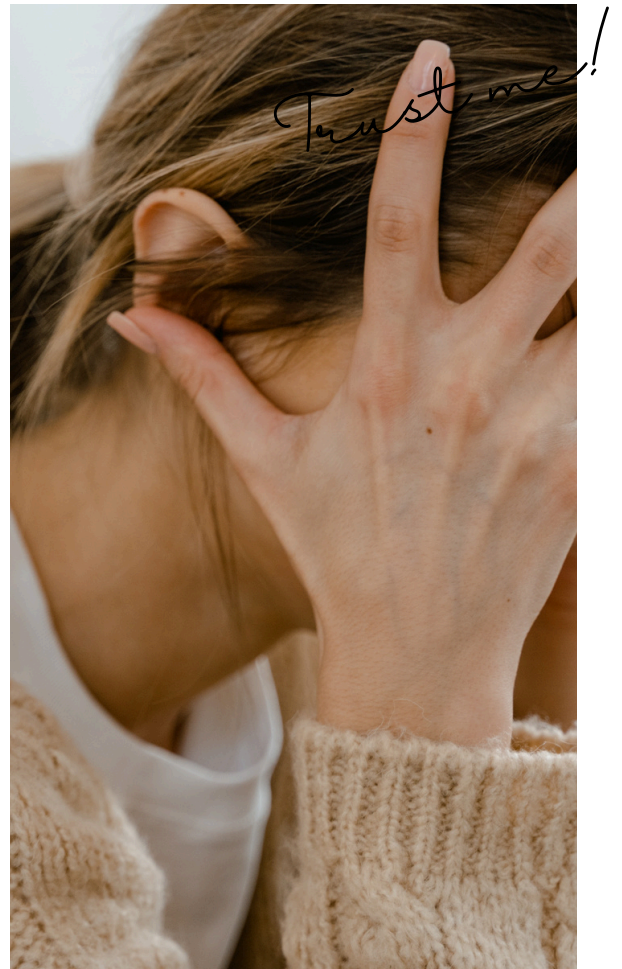


INTIMATE PEEL:-

Restore confidence in your own skin with depigmenting products!!



How to deal with dehydrated skin?



Dry skin can trigger irritation and lead to signs of aging, such as wrinkles. Find out the best tips here and what treatment can help you deal with it.